

**CHAMPION**

Guangdong Zhicheng Champion Group Co., Ltd.



CPS Series

Uninterruptible Power Supply

High Speed IGBT Drive



LED/LCD Display

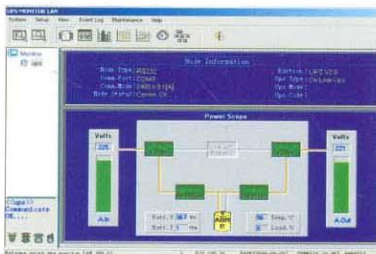


LED: 1KVA



LCD: 2KVA-20KVA

Monitoring System



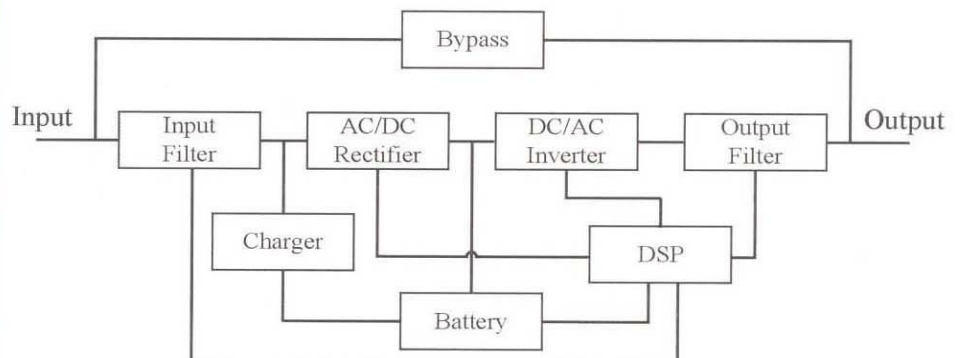
Introduction

Champion CPS Series UPS is the world's most advanced true On-Line Uninterruptible Power System. Champion CPS series adopts Digital Signal Processor(DSP) Technology, uses High current & High voltage Intelligent Power Module, High Speed IGBT drive IC and professional drive circuit, so it provides 100% Pure Sine Wave out put, and it guarantees full safety of your highly sophisticated equipment. CPS series totally isolates its connected load from every power problem that arises from the mains supply. It ensures 100% protection to the load from the full range of power disturbances including harmonics, common-mode noise and fault conditions on the input bus and vice

Features

- * DSP based PWM technology using IGBT
- * Double Conversion VFI technology
- * True Sine Wave output
- * Advanced High Speed IGBT drive
- * Output with isolation transformer
- * Perfect adaptability for RC&RL load
- * Intelligent battery management
- * LCD/LED display for status
- * Monitoring Software via RS232 port/SNMP(Optional)

Structure



**CHAMPION****Guangdong Zhicheng Champion Group Co., Ltd.**

CPS Series

Uninterruptible Power Supply



Electric properties

Specification		CPS	CPS	CPS	CPS	CPS	CPS	CPS	CPS	CPS	
		2001	2002	2003	2005	2006	2008	2010	2015	2020	
Rated capacity		1KVA	2KVA	3KVA	5KVA	6KVA	8KVA	10KVA	15KVA	20KVA	
Input	Voltage range	220Vac±25%									
	Frequency	50Hz±10%									
Control method		Mosfet	IGBT SPWM								
Output	Voltage	220Vac±1%									
	Frequency	50Hz±1% (Battery Mode)									
	Wave	Sine wave, THD<3% (0-100% linear load)									
	Overload ability	Transfer to bypass within 10s if the load is more than 120%;									
	Power rate	0.8 lagging									
	Peak rate	3:1									
	Dynamic respond range	Load changes from 0% to100% or from 100% to 0%, the change of output voltage is less than ±4%									
AC fault transfer time		0 ms									
Batt.	Type	VRLA battery									
	Backup time	5-10Min for standard UPS. The backup time can be 8 hours									
	DC voltage	48V	96V	120 V	192V						
	Charge time	Charge 7-10 hours to 90%									
Efficiency (AC/Battery)		>80%	>83%	>85%				>88%			
Protection		Short circuit protection; Surge voltage protection;									
Safety standard		Accord with IEC60950, GB4943									
Electromagnetism compatible		Accord with EN50091, GB9245									
Display		LED indicator light: AC input/ Bypass/ Inverter/ Battery/ Overload									
Communication interface		RS232, SNMP(Optional)									
Enviro- nment	Temperature	0-40℃									
	Humidity	0-90% (Non-condensing)									
Noise		<55dB				<60dB					
Dimension L x W x H		mm	439x235 x350	608x237x496		583x264 x620		550x400x1000			580x480 x1190
Weight(without batt.)		Kg	36	55.5	63.5	90.5	99	120	139	176	222

www.champion-cheng.com